



MF Series

Electromagnetic Flow Meter



Size available : DN 50~DN 800 (2" ~32")

PRODUCT FEATURES

- Based on Faradays Law
- Fluids conductivity $\geq 5\mu\text{s/cm}$
- Remote LCD display
- Bi-Directional flow measurement
- Real-time display of flow-rate, total and forward/reverse accumulation
- Alarm- Empty pipe, High/Low flow limit, reverse flow, etc.
- Customized lining, electrode, and flange connection

OPTIONAL FEATURES

Process connection Flange : DIN, ANSI, JIS & other standards upon requirement

Lining

- CR (Neoprene) $\leq 65^\circ\text{C}$
- PTFE..... $\leq 120^\circ\text{C}$
- Ceramic..... $\leq 315^\circ\text{C}$

Electrodes

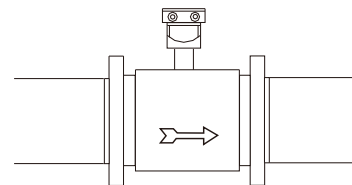
- SS316L :
 - Industrial consumption
 - Service water
 - Domestic wastewater
 - Fluids turbidity < 30 NTU
- HC :
 - Corrosive liquid

APPLICATIONS

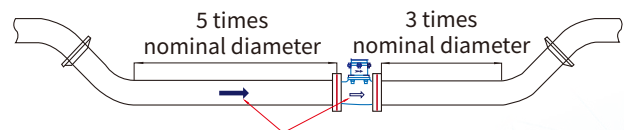
- Water supply, water distribution network
- Waste water treatment plant
- Hot water; Irrigation; Sea water; General industry

INSTALLATION REQUIREMENT

1. Horizontal installation



2. Requirements for straight pipe upstream/ downstream: 5 x DN / 3 X DN.



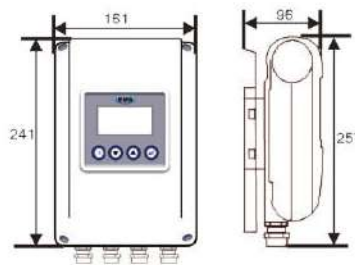
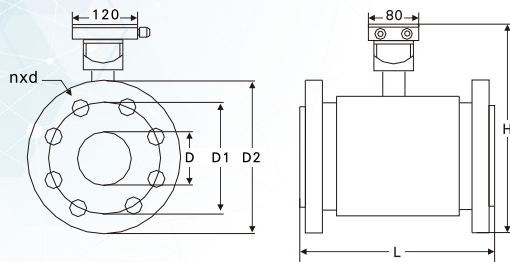
Flow direction shall be accordance with the flow direction mark

3. The pipe shall be full of water while operating.



DIMENSIONS

Approx Weight 1.9 kg



Unit : mm

Diameter	Pressure	Length	DIN PN10			DIN PN16			Weight
			D2	D1	n*d	D2	D1	n*d	
D	MPa	L	D2	D1	n*d	D2	D1	n*d	kg
50 (2")	4.0	200	165	125	4*18	165	125	4*18	12
80 (3")	4.0	200	200	160	8*18	200	160	8*18	18
100 (4")	1.6	250	220	180	8*18	220	180	8*18	21
150 (6")	1.6	300	285	240	8*22	285	240	8*22	32
200 (8")	1.0	350	340	295	8*22	340	295	12*22	44
250 (10")	1.0	450	395	350	12*22	405	355	12*26	48
300 (12")	1.0	500	445	400	12*22	460	410	12*26	58
350 (14")	1.0	500	505	460	16*22	520	470	16*26	78
400 (16")	1.0	600	565	515	16*26	580	525	16*30	101
450 (18")	1.0	600	615	565	20*26	640	585	20*30	111
500 (20")	1.0	600	670	620	20*26	715	650	20*33	130

TECHNICAL DATA

Parameters	Specifications
Diameter	DN 50 (2 ")~ DN 800 (32 ")
Measuring Principles	Faradays Law
Flow Range	0.3 m/s ~ 10 m/s
Accuracy	±0.2 %FS
Operating Pressure	4.0 Mpa (DN 15~DN 80) 1.6 Mpa (DN 100~DN 150) 1.0 Mpa (DN 200~DN 800)
Applications	Raw water, clean water, sewage water, fluids conductivity $\geq 5 \mu\text{s/cm}$
Digital Output	RS-485 (Modbus RTU), Pulse (0.001L~1.0 m ³ /p)
Analogue Output	4-20 mA (load < 750Ω) / error : 0.1%±10μA
Power Supply	AC power 110~240VAC (-15% / +10%), 48~63 Hz
Power Dissipation	Lower than 20W
Ambient Temperature	-20°C to 60°C
Ambient Humidity	5% ~90%
Connections	Flange (DIN, ANSI, JIS & other standards upon requirement)
Communication Distance	3m (Standard distance from converter to sensor)
Body Material	Carbon Steel, Stainless Steel
Lining Material	CR, PTFE, Ceramic (Optional)
Electrode	SUS316L, HC (Optional)
Enclosure Rating	Sensor : IP68 / Converter : IP65

